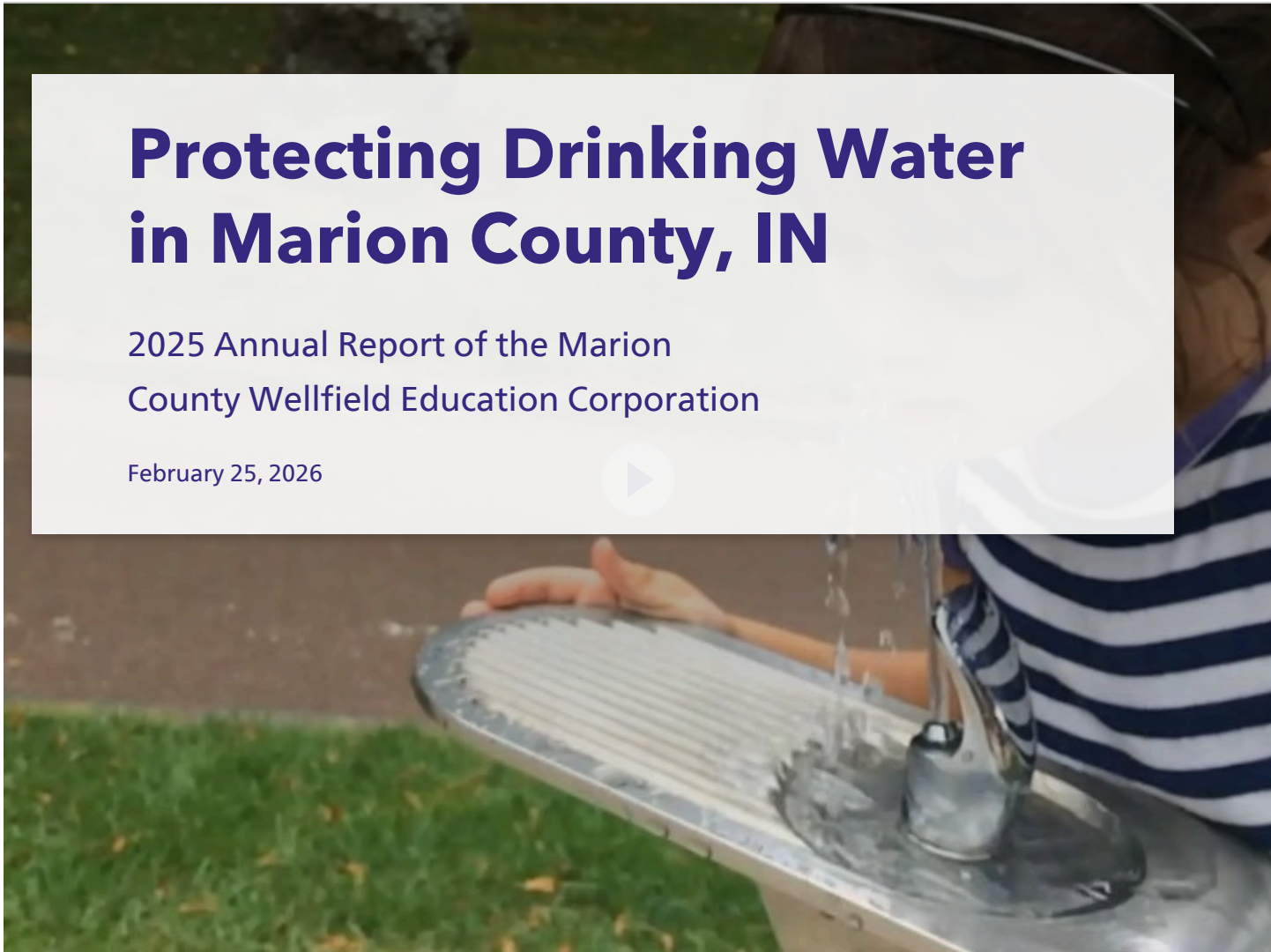




# Protecting Drinking Water in Marion County, IN

2025 Annual Report of the Marion  
County Wellfield Education Corporation

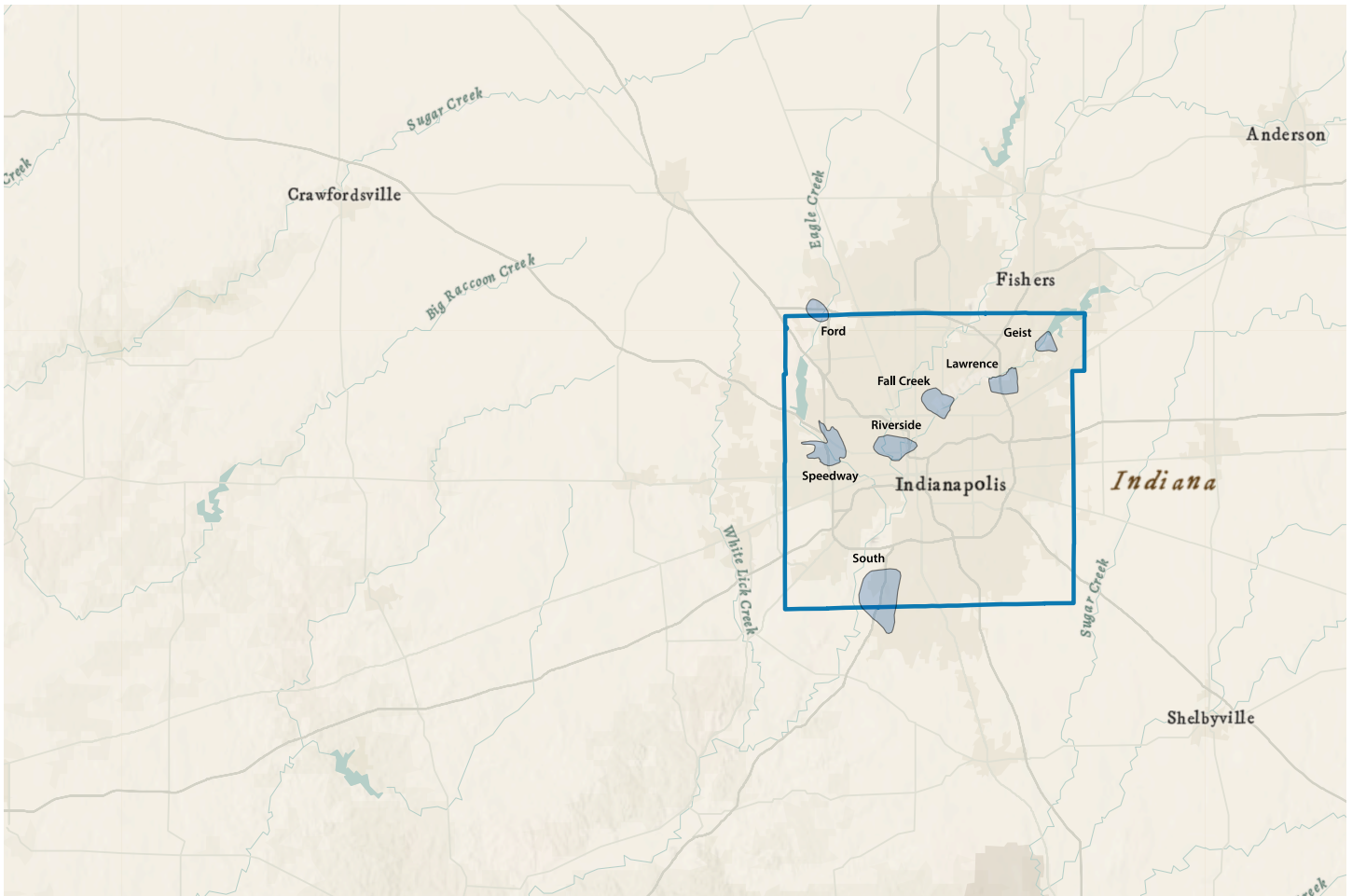
February 25, 2026



## Our Drinking Water

Behind the scenes in Marion County, dedicated water professionals work around the clock to deliver clean water to our community.

The Marion County Wellfield Education Corporation (MCWEC) works with water utilities, businesses and individuals to **protect groundwater**, a major source of drinking water in the county.

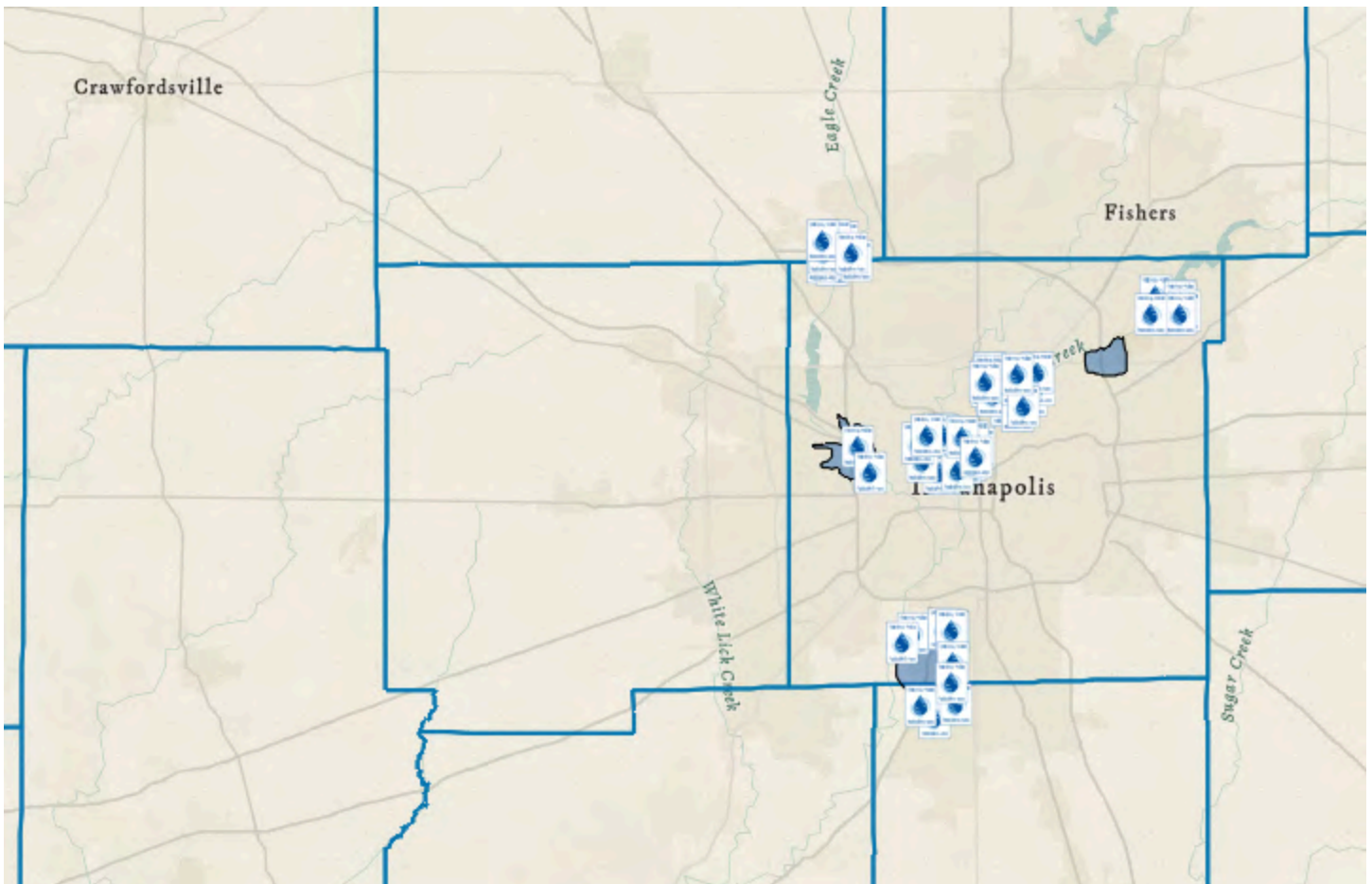


## Where do we get drinking water?

In Marion County, 25% of our drinking water comes from **groundwater**. Water is pulled from underground by wells in one of the county's 7 **wellfields** and pumped to the water treatment plants.

The utilities can also treat surface water from rivers, lakes, or streams to supply enough water for their customers. They are required by law to report the safety and outcomes of their treatment process. These **water quality reports** are available to the public.

*Learn more about groundwater, drinking water, ways to protect groundwater with customizable graphics from **One Water Indiana**.*



Esri | TomTom | Garmin | SafeGraph | CGIAR | USGS | FAO | METI/NASA | E... 10 mi Powered by Esri

## How do I know I'm in a wellfield?

You may see signs as you drive throughout wellfields in Marion County and across the state.

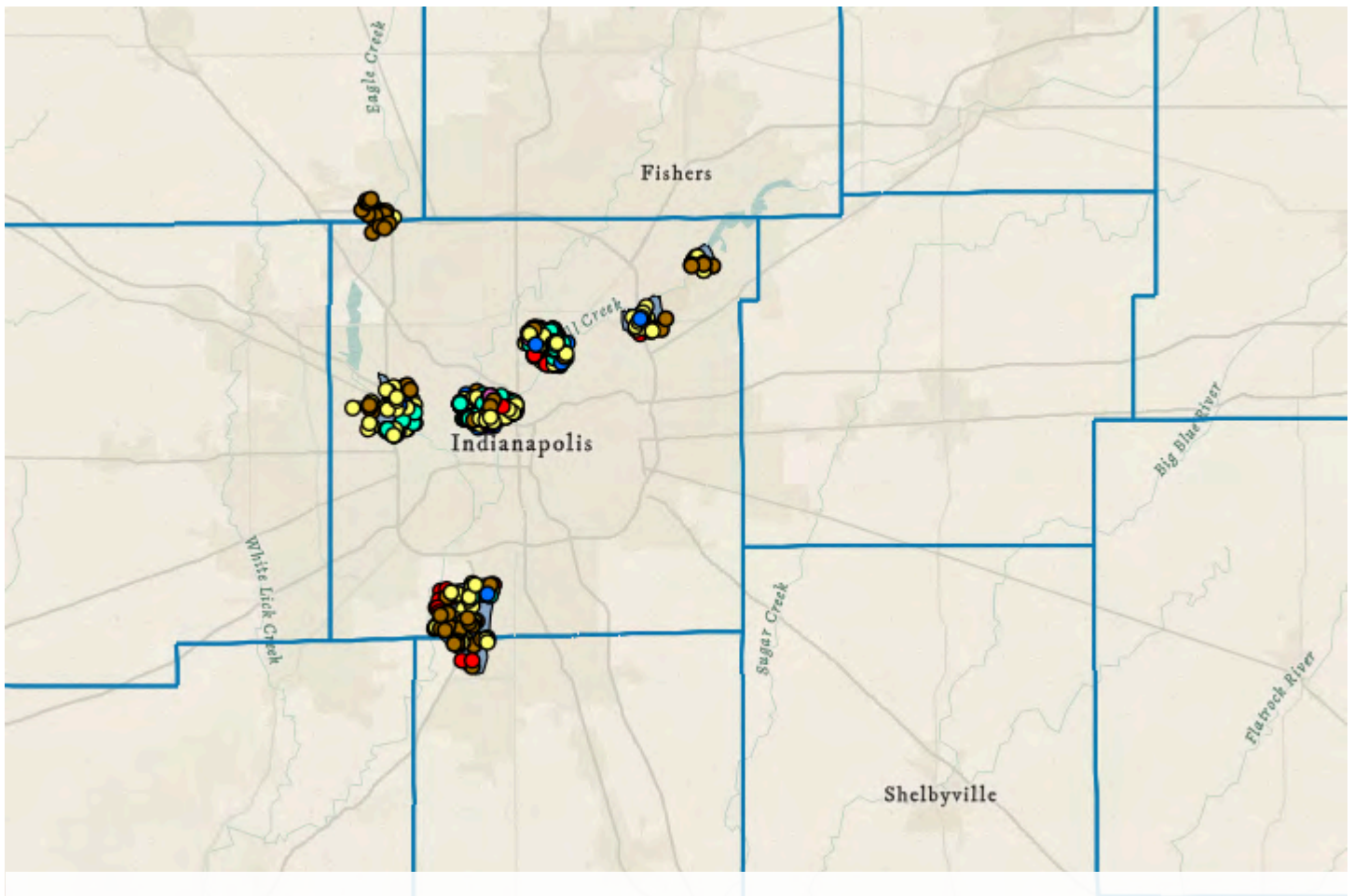
The signs help alert the public that they are entering an area where special efforts are needed to keep contaminants out of the land and water.

If you notice that one of these signs are damaged in Marion County, please let us know.

[Report a damaged sign](#)

## MCWEC helps protect groundwater

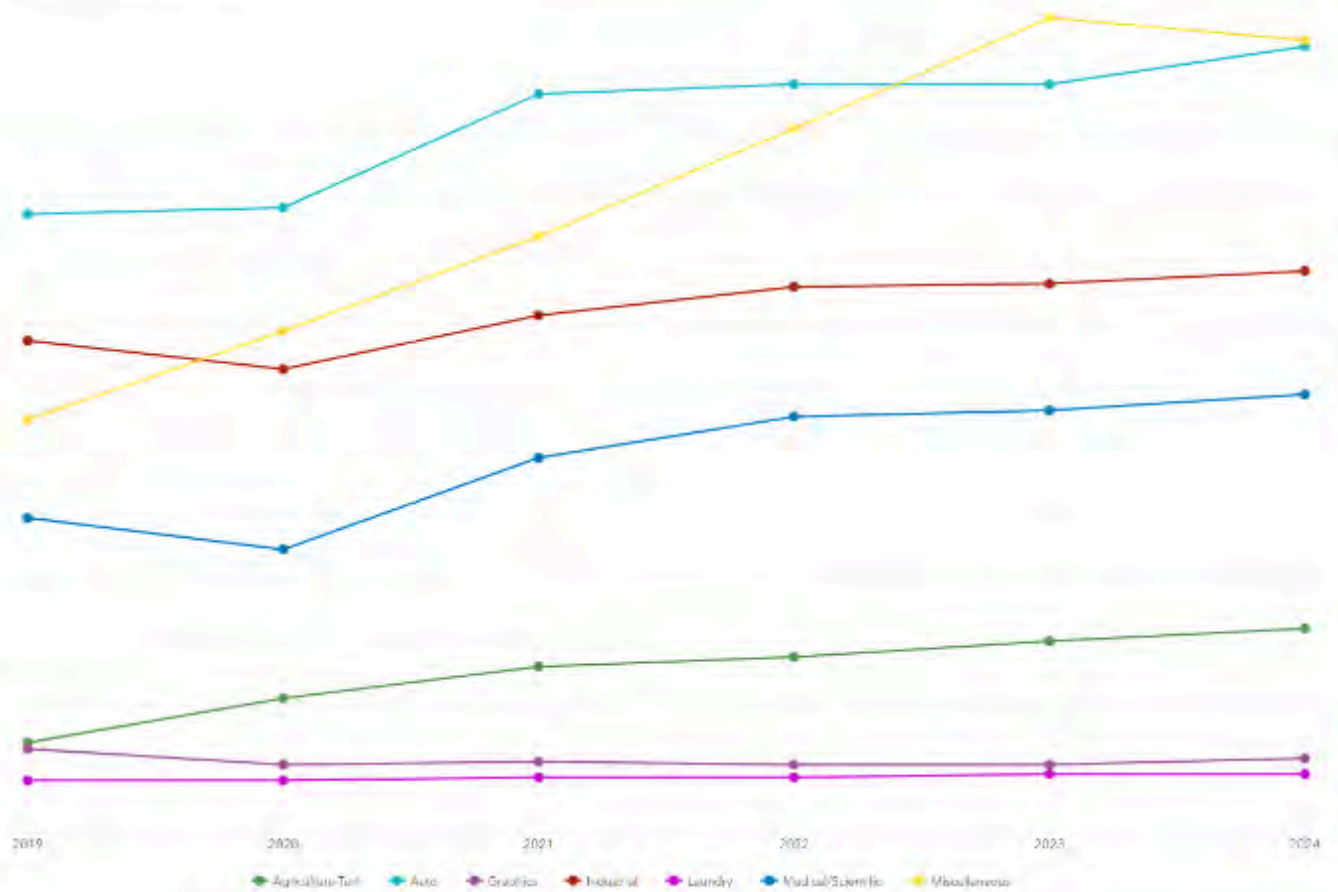
The following are some examples of what the Marion County Wellfield Education Corporation completed in 2025 to supplement existing regulatory drinking water protection activities.



### Business Surveys

MCWEC documents **potential groundwater contamination** sources through drive surveys in the wellfields.

Businesses are categorized to better understand the potential threats to drinking water.



## Potential Contaminants

In 2025, over **900** businesses in the wellfields were identified in a category that is a potential risk to groundwater contamination.

These categories have specific chemicals or processes that could be a threat to water quality. Some examples include:

- By-products of industrial processes, cleaners and degreasers, waste oil and other petroleum products.
- Pesticides, herbicides, metals and salts from businesses, industry or residential septic systems.
- Bacteria and viruses that may come from sewage treatment plants, agricultural livestock operations, medical facilities.
- Any business that may store chemicals on site such as swimming pools, nail salons, and tattoo parlors.

In addition to the business catalogue, MCWEC also provides the water utilities with a custom web application which summarizes other publicly available potential and known contaminant sources.

## **Public Outreach**

MCWEC attends events such as Earth Day to educate the public about proper waste disposal and household chemical management.

We participate in local water protection summits, such as the 2026 Indiana Water Data Hub Workshop.

We also write educational articles about groundwater and post to our website: [mcwec.org](http://mcwec.org)

## **Business Assistance**

MCWEC provides FREE technical assistance and equipment to businesses in the wellfields to assist with regulatory compliance.

## **Take Action**

Everyone can participate. **Individuals** can take simple steps at home to keep chemicals out of the groundwater.

**Businesses** located in one of the Wellfield Protection Areas are required by law to maintain compliance with local codes . MCWEC provides businesses FREE, CONFIDENTIAL wellfield reviews.

**Get started today!**

## **Check if you are in a wellfield**

**Use our locator** or call us at the numbers below to get started

Call (317) 630-9060

Para español, llame al 317-630-9060.

## **Complete FREE, CONFIDENTIAL Wellfield Review**

A trained environmental professional will visit and review your business operations related to potential groundwater contaminants.

## **Receive FREE equipment**

Some businesses may also be eligible for FREE secondary containment equipment, spill kits to prevent / clean up hazardous spills, or outdoor drinking water protection signs.

## **Implement recommendations and train employees**

Receive a report with suggestions related to related to chemical/waste handling, storage and disposal; educational signage; spill kits; emergency response spill prevention plans and more. Now you can be confident you are protecting our drinking water!



To all business owners, individuals, community organizations, legislators, professionals, and countless others who have dedicated time and resources to protecting Marion County's drinking water resources - we extend our gratitude for the clean water we drink and use day in and day out. **THANK YOU!**



## **About the Authors**

### **The Marion County Wellfield Education Corporation**

The Marion County Wellfield Education Corporation (MCWEC) is a 501(3)c non-profit corporation established in 1996 by the Marion County Wellfield Protection Zoning Ordinance to support the protection of groundwater and drinking water supplies in Marion County, Indiana. MCWEC has no regulatory authority and is only interested in the education of best management practices for groundwater protection.

**Chris Barnett** - Board President / Treasurer - Marion County Wellfield Education Corporation

**Tom Crouch** - Vice President - Marion County Wellfield Education Corporation

**Rachel Walker** - Secretary - Marion County Wellfield Education Corporation

**John Havard** - Board Member - Citizens Energy Group

**Dan Settle** - Board Member - City of Lawrence

**Ronnie Smith** - Board Member - Speedway Water Works

**Joe Merrick** - Board Member - Attorney, Indiana Court of Appeals

**Shannon Norman** - Board Member - Department of Metropolitan Development, City of Indianapolis

**Jeff Larmore** - Board Member - Marion County Department of Public Health

**John Mundell & Julie Reyes** - MCWEC Consultants - Mundell & Associates

The Marion County Wellfield Education Corporation board members and [Mundell & Associates](#), a local environmental consulting firm under contract with MCWEC, contributed to this yearly report.

Learn more about MCWEC programs and activities at [www.MCWEC.org](http://www.MCWEC.org) or contact us by email at [info@mcwec.org](mailto:info@mcwec.org).

*Disclaimer: Your use of the mapping assessment, and source information provided in this StoryMap constitutes your understanding and acceptance of the following conditions: 1) The information provided on this site is for convenience only and is compiled from drive surveys and other public records and data. In the preparation of this StoryMap extensive efforts have been made to offer the most current, correct, and clearly expressed information possible; however, inadvertent errors can occur, and information placed on this StoryMap is not intended to replace any official source. Contact the appropriate official information sources for verification of the information provided on this StoryMap. 2) Use of any of this information is at the user's own risk. The Marion County Wellfield Education Corporation (MCWEC) does not assume any legal responsibility for the information contained herein, which is provided "as is" with no warranties of any kind. MCWEC disclaims all liability of any kind arising out of the use of, or misuse of this information and disclaims all express or implied warranties, including warranties of merchantability, fitness for a particular purpose, and non-infringement of proprietary rights. By using this website, I agree that MCWEC will not be liable for any actions, claims, damages or judgments of any nature whatsoever arising out of the use or misuse of the information contained in these Web pages.*

## **Credits**

For questions about data, please contact [info@mcwec.org](mailto:info@mcwec.org).