



Protecting Drinking Water in Marion County, IN

2023 Annual Report of the Marion County Wellfield Education Corporation

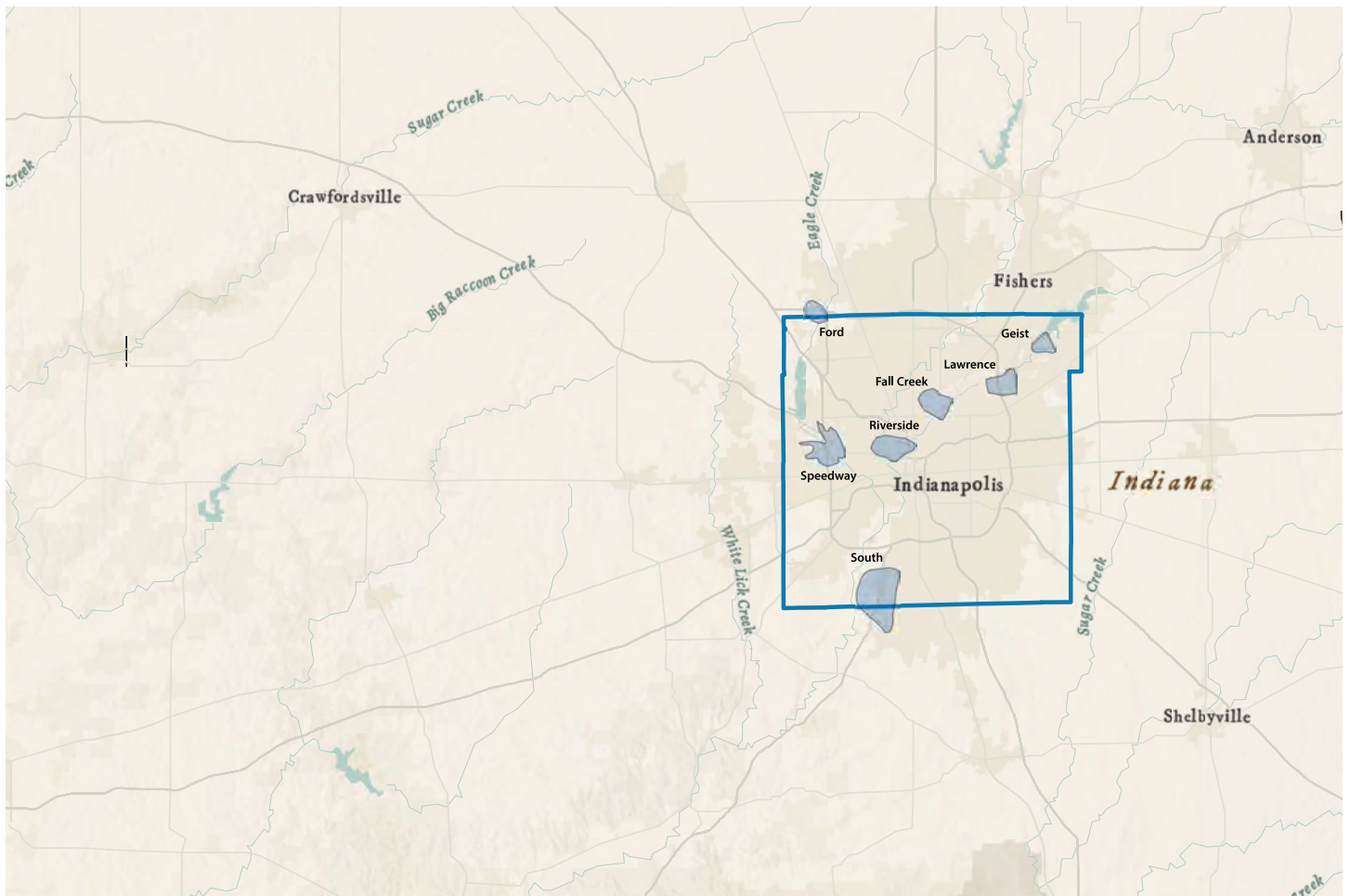
April 2024



Our Drinking Water

Behind the scenes in Marion County, dedicated water professionals work around the clock to deliver clean water to our community.

The Marion County Wellfield Education Corporation (MCWEC) works with water utilities, businesses and individuals to **protect groundwater**, a major source of drinking water in the county.

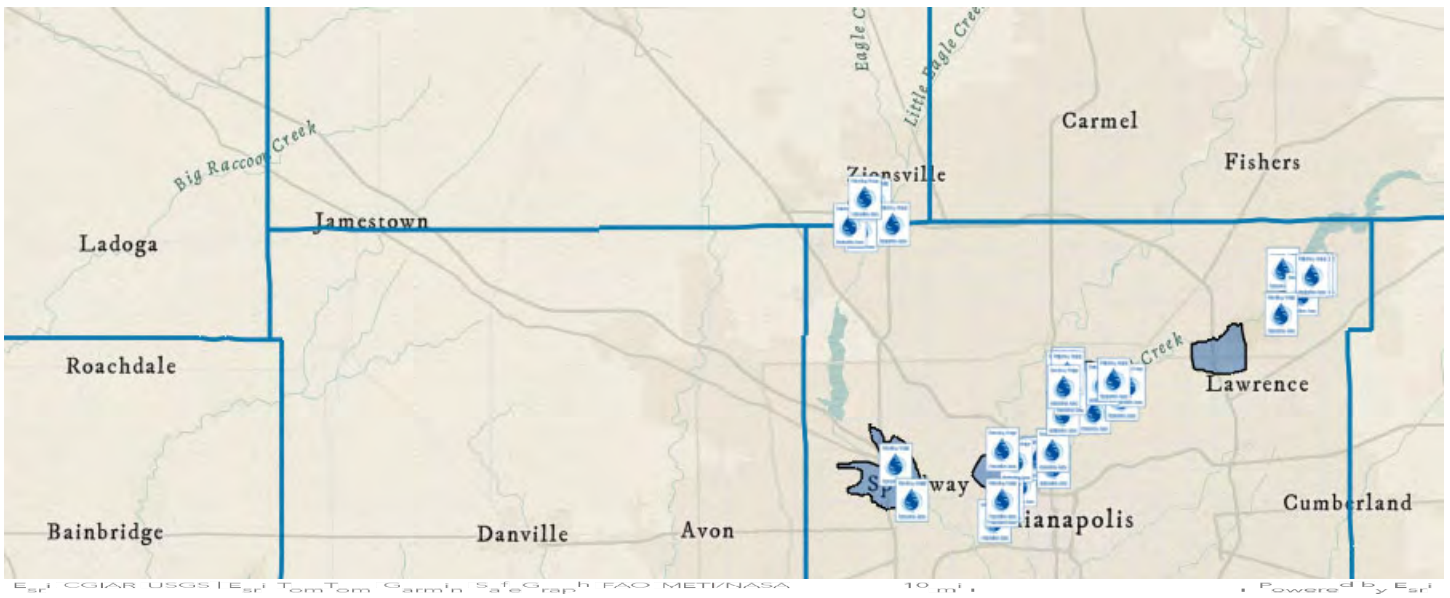


Where do we get drinking water?

Marion County has 7 wellfields. Water is pulled from underground wells in these areas and pumped through to the water treatment plants.

The utilities can also treat surface water from rivers, lakes, or streams to supply enough water for their customers.

How do I know my water is safe to drink? Read about the [water quality reports](#) required by law.



How do I know I'm in a wellfield?

You may see signs as you drive throughout wellfields in Marion County and across the state.

If you notice a damaged sign in Marion County, please let us know.

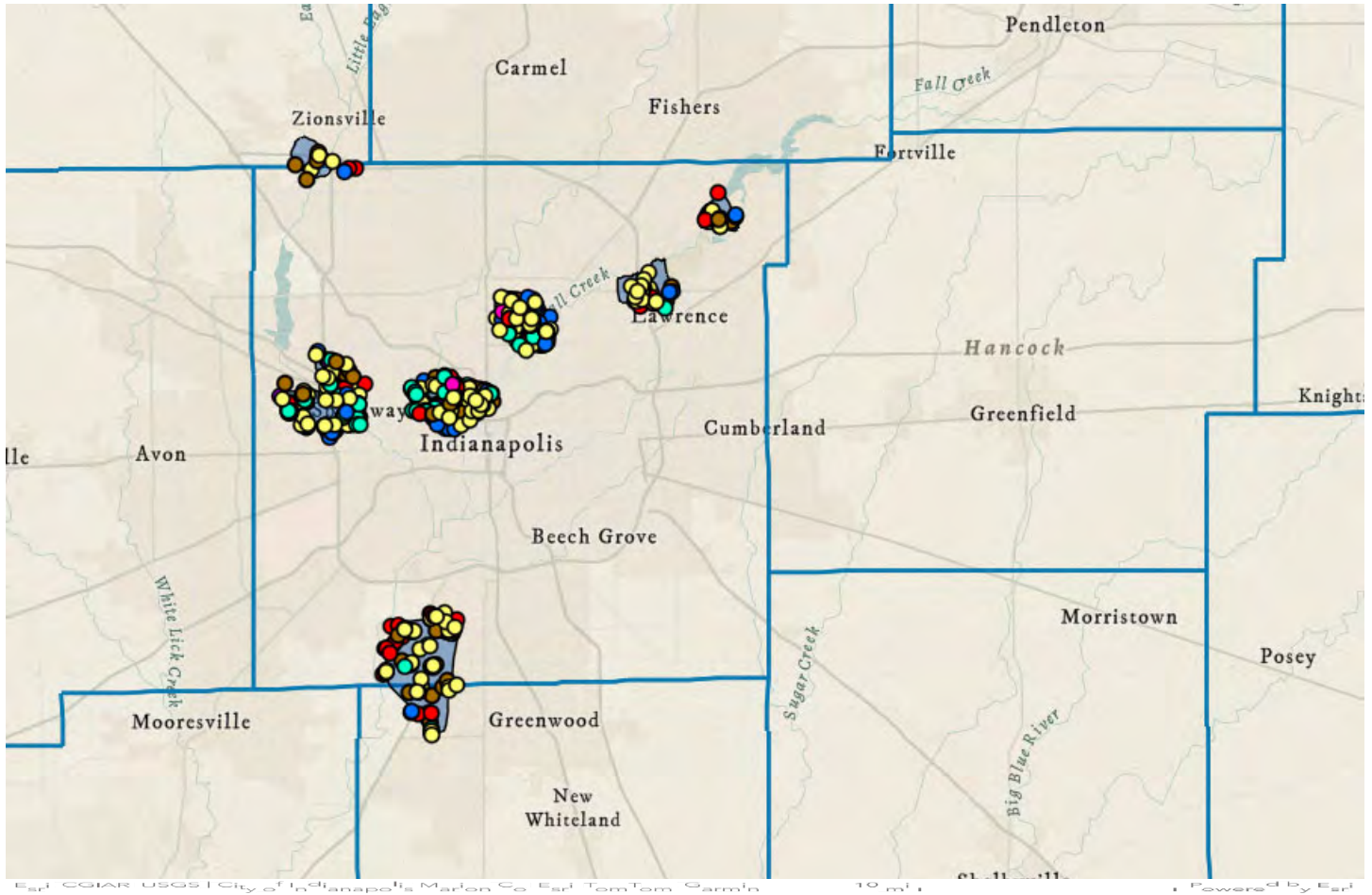
Report a damaged sign



MCWEC helps protect groundwater.



The following are some examples of what the Marion County Wellfield Education Corporation completed in 2023 to supplement existing regulatory drinking water protection activities.

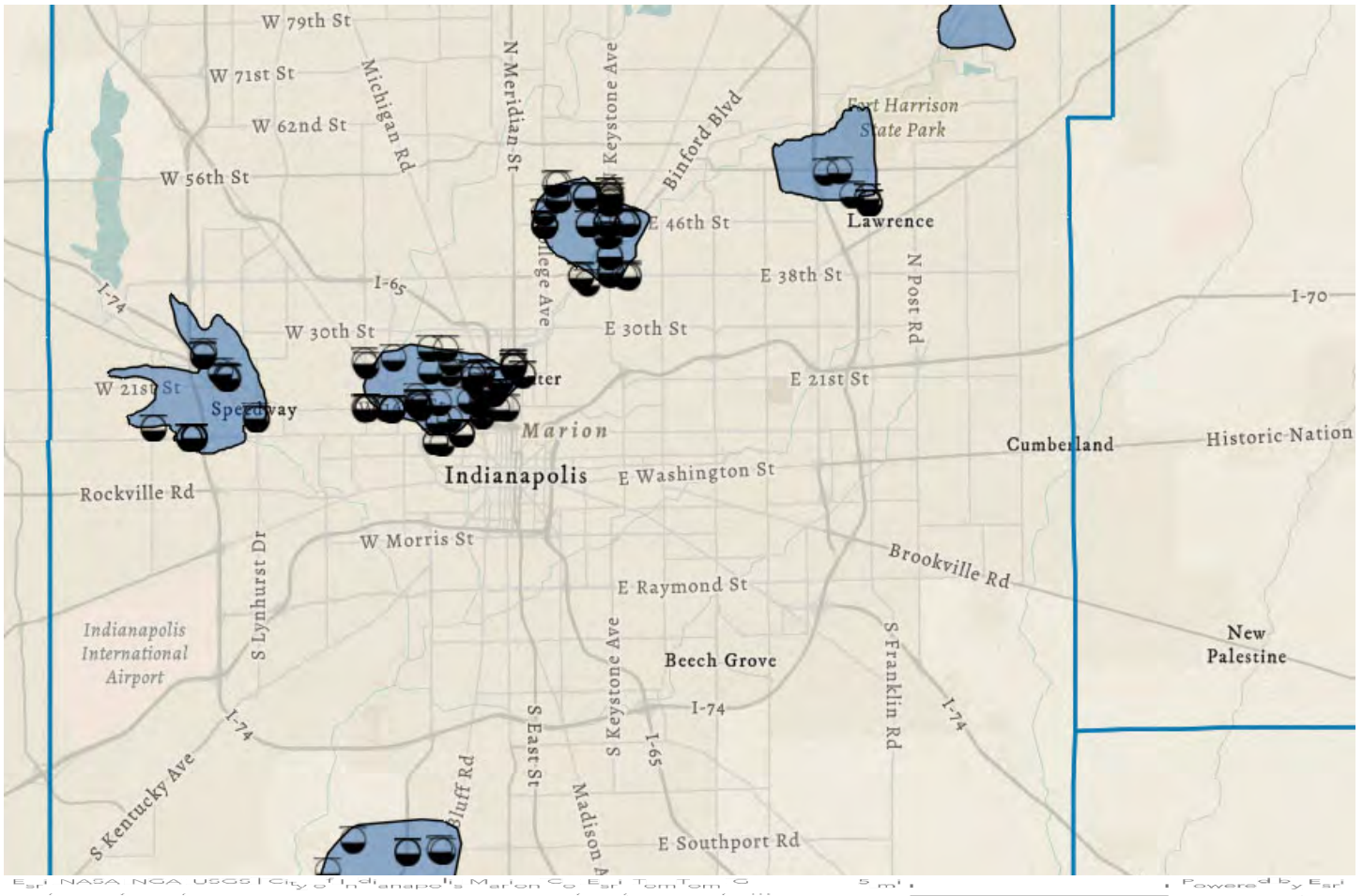


Business Surveys

MCWEC documents **potential groundwater contamination** sources through drive surveys in the wellfields.

In 2023, over **800** businesses were identified in a category that is a potential risk to groundwater contamination.

Use the +/- buttons to scroll in and view locations.



Contaminant Database

MCWEC provides the water utilities with a custom dashboard and set of maps which summarize publicly available environmental data sources.

This data is used to understand potential threats and known groundwater contamination sources.

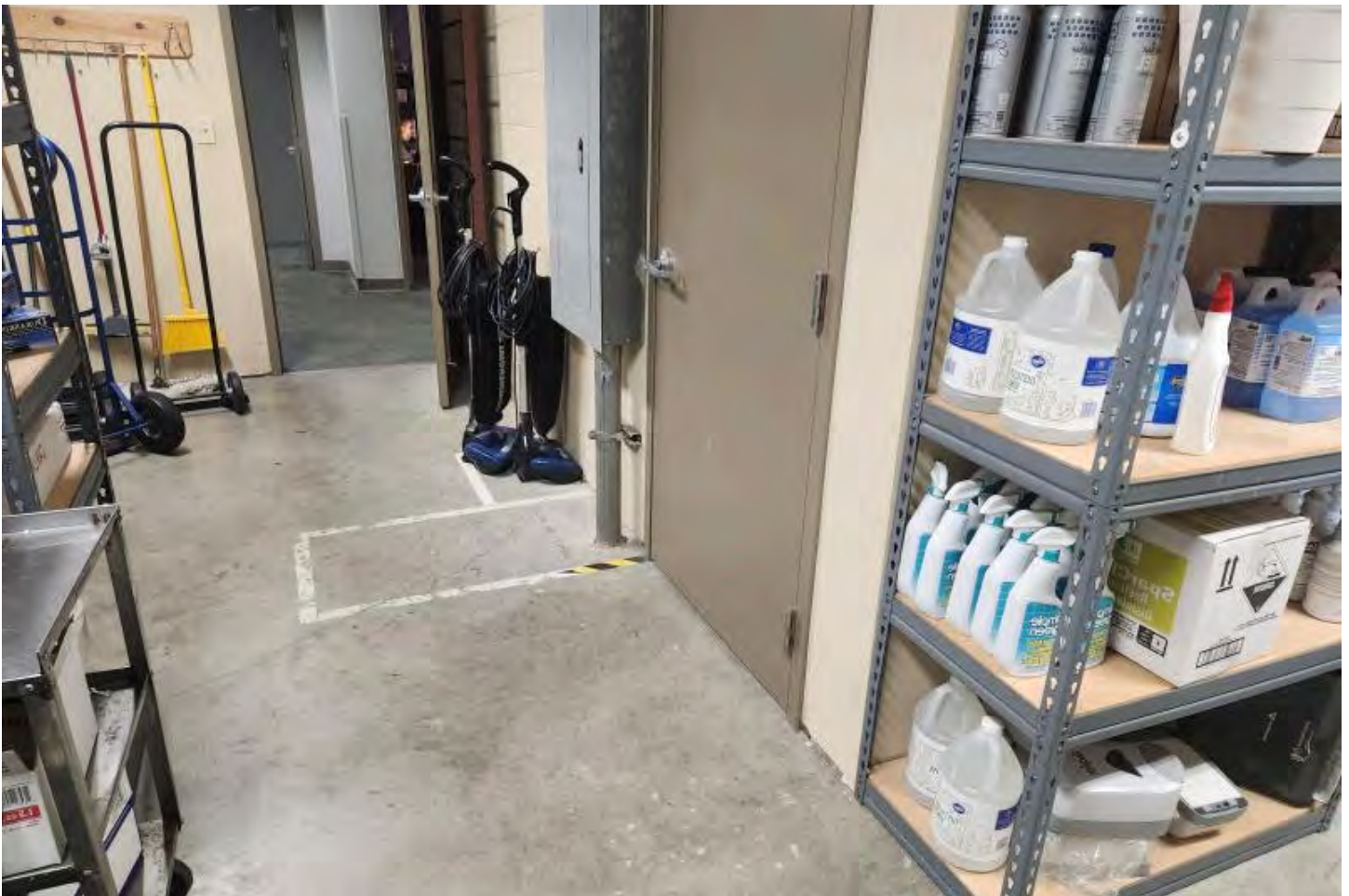
Pictured: Leaking Underground Storage Tanks, one of the known sources of contamination. Data set from IndianaMap, February 2024.



Public Outreach

MCWEC attends events such as Earth Day to educate the public about proper waste disposal and household chemical management.

We write educational articles about groundwater and post to our website: mcwec.org



Business Assistance

MCWEC provides FREE technical assistance and equipment to businesses in the wellfields to assist with regulatory compliance.

Take Action

Everyone can participate. **Individuals** can **take simple steps** at home to keep chemicals out of the groundwater.

Businesses located in one of the Wellfield Protection Areas are required by law to maintain compliance with **local codes**.

MCWEC provides businesses FREE, CONFIDENTIAL assessments.

Get started today!

Check if you are in a wellfield

Use our locator or call us at the numbers below to get started

Call (317) 630-9060

Para español, llame al 317-630-9060.

Complete FREE, CONFIDENTIAL site visit

A trained environmental professional will visit and assess your business operations related to potential groundwater contaminants.

Receive FREE equipment

Some businesses may also be eligible for FREE secondary containment equipment, spill kits to prevent / clean up hazardous spills, or outdoor drinking water protection signs.

Implement recommendations and train employees

Receive a report with suggestions related to related to chemical/waste handling, storage and disposal; educational signage; spill kits; emergency response spill prevention plans and more. Now you can be confident you are protecting our drinking water!



We applaud YOU!

To all business owners, individuals, community organizations, legislators, professionals, and countless others who have dedicated time and resources to protecting Marion County's drinking water resources - we extend our gratitude for the clean water we drink and use day in and day out. **THANK YOU!**



About the Authors

The Marion County Wellfield Education Corporation

The Marion County Wellfield Education Corporation (MCWEC) is a 501(3)c non-profit corporation established in 1996 by the Marion County Wellfield Protection Zoning Ordinance to support the protection of groundwater and drinking water supplies in Marion County, Indiana. MCWEC has no regulatory authority and is only interested in the education of best management practices for groundwater protection.

Chris Barnett



**Board President /
Treasurer**
Marion County
Wellfield
Education
Corporation

Tom Crouch

Vice President
Marion County
Wellfield
Education
Corporation

Rachel Walker



Secretary
Marion County
Wellfield
Education
Corporation

John Havard

Board Member
(Citizens Energy
Group)

Shannon Norman

Board Member
(Department of
Metropolitan
Development, City of
Indianapolis)

Joe Merrick

Board Member
(Attorney, Indiana
Court of Appeals)

Jeff Larmore

Board Member
(Marion County
Public Health
Department)

Dan Settle

Board Member
(Lawrence Utilities)

John Mundell



MCWEC Consultant
Mundell & Associates,
Inc.

Julie Reyes



MCWEC Consultant
Mundell & Associates,
Inc.

The Marion County Wellfield Education Corporation board members and **Mundell & Associates**, a local environmental consulting firm under contract with MCWEC, contributed to this yearly report.

Learn more about MCWEC programs and activities at **www.MCWEC.org** or contact us by email at **info@mcwec.org**.

***Disclaimer:** Your use of the mapping assessment, and source information provided in this StoryMap constitutes your understanding and acceptance of the following conditions: 1) The information provided on this site is for convenience only and is compiled from drive surveys and other public records and data. In the preparation of this StoryMap extensive efforts have been made to offer the most current, correct, and clearly expressed information possible; however, inadvertent errors can occur, and information placed on this StoryMap is not intended to replace any official source. Contact the appropriate official information sources for verification of the information provided on this StoryMap. 2) Use of any of this information is at the user's own risk. The Marion County Wellfield Education Corporation (MCWEC) does not assume any legal responsibility for the information contained herein, which is provided "as is" with no warranties of any kind. MCWEC disclaims all liability of any kind arising out of the use of, or misuse of this information and disclaims all express or implied warranties, including warranties of merchantability, fitness for a particular purpose, and non-infringement of proprietary rights. By using this website, I agree that MCWEC will not be liable for any actions, claims, damages or judgments of any nature whatsoever arising out of the use or misuse of the information contained in these Web pages.*

Credits

For questions about data, please contact info@mcwec.org.

**Identified and Potential
Source Data**

[Indiana Geographic
Information Office,
IndianaMap](#)