

Table of Contents

Our Drinking Water.....2

Where does our water come from?.....4

Protecting our drinking water.....5

MCWEC wellfield survey.....7

Other potential sources of groundwater contamination.....11

Groundwater protection activities in 2022.....16

What can I do to protect our drinking water?.....18

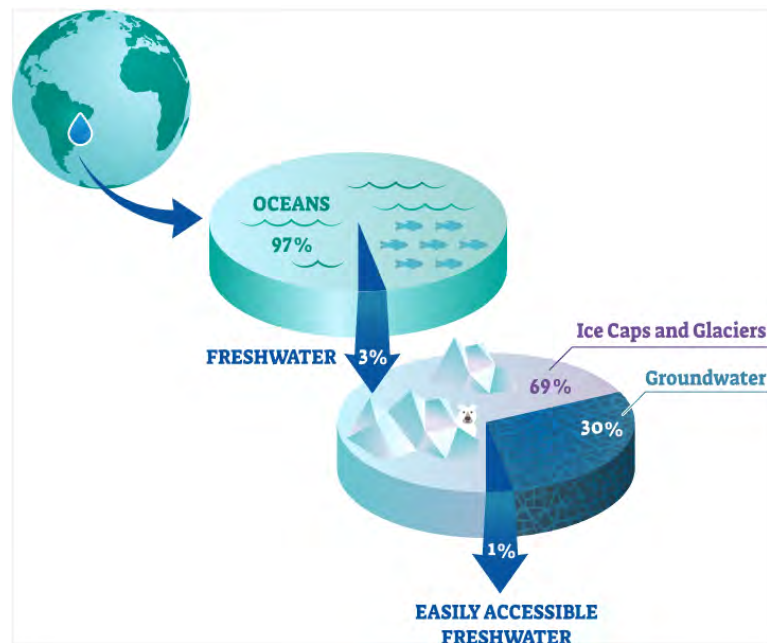
About the Authors.....20

Disclaimer: Your use of the mapping assessment, and source information provided in this StoryMap constitutes your understanding and acceptance of the following conditions: 1) The information provided on this site is for convenience only and is compiled from drive surveys and other public records and data. In the preparation of this StoryMap extensive efforts have been made to offer the most current, correct, and clearly expressed information possible; however, inadvertent errors can occur, and information placed on this StoryMap is not intended to replace any official source. Contact the appropriate official information sources for verification of the information provided on this StoryMap. 2) Use of any of this information is at the user's own risk. The Marion County Wellfield Education Corporation (MCWEC) does not assume any legal responsibility for the information contained herein, which is provided "as is" with no warranties of any kind. MCWEC disclaims all liability of any kind arising out of the use of, or misuse of this information and disclaims all express or implied warranties, including warranties of merchantability, fitness for a particular purpose, and non-infringement of proprietary rights. By using this website, I agree that MCWEC will not be liable for any actions, claims, damages or judgments of any nature whatsoever arising out of the use or misuse of the information contained in these Web pages.

Our Drinking Water


Approximately **97%** of all water on earth is unable to be consumed (saltwater).

Of the world's water which can be consumed (freshwater), only **1%** is easily accessible.



When we turn on our faucet, whether at home or at work, clean water runs freely out. Do we give a second thought as to how it got there?

Behind the scenes in Marion County, dedicated water professionals work around the clock to maintain the infrastructure required to deliver

 **11 BILLION**
GALLONS OF WATER PER YEAR
TO

 **450 THOUSAND**
HOMES AND BUSINESSES IN MARION COUNTY

Delivering this clean water to our community is no easy task. In addition to surface water that is more easily accessible, we need to use groundwater as a source of our drinking water.

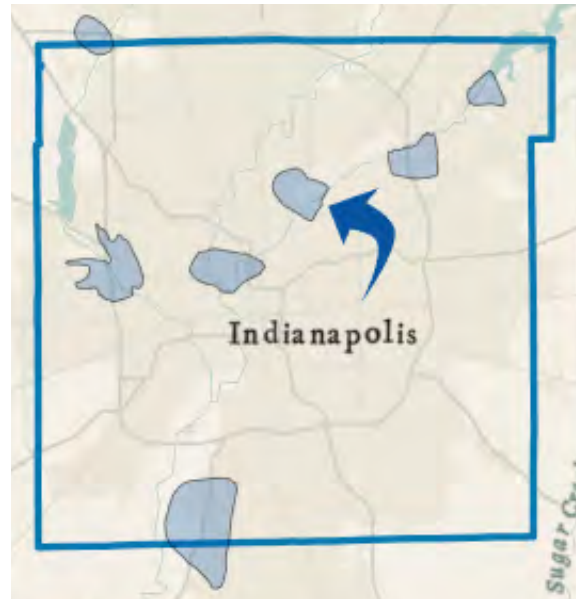
Journey with us to understand how the **Marion County Wellfield Education Corporation** together with our city, state, and federal governments protect our drinking water sources and how YOU can be a part of ensuring clean water reaches everyone in our community, not only today, but for future generations.

Where does our drinking water come from?

The 3 water utilities (Citizens Energy Group, the City of Lawrence, and the Town of Speedway) collect surface water (rivers lakes, streams) and pump groundwater (water in the tiny gaps between underground rocks, soils, and sediments) from water wells.

The land around these wells are called "wellfield protection areas."

These wellfields are regulated to protect groundwater quality for municipal use.



Marion County has 7 wellfields.

The 7 wellfields cover a total area of 33 square miles.

- 1 Fall Creek Wellfield
- 2 Ford Wellfield
- 3 Geist Wellfield
- 4 Lawrence Wellfield
- 5 Riverside Wellfield
- 6 Speedway Wellfield
- 7 South Wellfield



You may see this sign as you drive in a wellfield.

How do I know my water is **safe to drink**?

Business activities in the wellfields are regulated by various federal, state, and local laws to ensure water **reaching the wells** is not contaminated.



To ensure water is then **purified** by the public utilities, each utility is required to publish a yearly Consumer Confidence Report detailing how the water meets state and federal drinking water purification standards.

The Indiana Water Monitoring Council produces an annual **Indiana Water Report** to describe more public, private, and non-profit water monitoring and research activities throughout Indiana.



Protecting Our Drinking Water

In an addition to federal, state, and local laws, the **Marion County Wellfield Education Corporation (MCWEC)**, a 501(3)c non-profit corporation, was established in 1996 through the Marion County Wellfield Protection Zoning Ordinance to support the protection of groundwater and drinking water supplies in Marion County.

MCWEC responsibilities include:



- Providing FREE technical assistance and equipment to businesses in the wellfields
- Public outreach to promote awareness of protecting groundwater
- Documenting potential groundwater contamination sources and providing data for identified groundwater contamination sources in the wellfields

Keeping Track - Potential Sources of Groundwater Contamination

Businesses that are **potential sources of groundwater contamination** in the wellfields are categorized into one of the following groups based on business activity:

Agriculture		farms, golf courses, and parks
Auto		gas stations, auto repair, washing and sales facilities, truck terminals and state/municipal fleet sites
Graphics		printing facilities (paper, textiles and signage)
Industrial		fire stations, utilities, large industry sites, waste handling/storage/recycling sites, refineries, and bulk terminals
Laundry		commercial dry-cleaning facilities
Medical / Scientific		hospitals, medical clinics, dentists, training and research facilities, medical/scientific waste disposal facilities
Miscellaneous		unknown/unidentifiable businesses, production of food and beverages, and other businesses that may contain minor sources

Any business that does not fall into a potential source category is marked as a "non-potential source." This includes properties with no known history of contamination and other businesses that are considered low to no risk of having potential groundwater contaminants on-site such as restaurants.

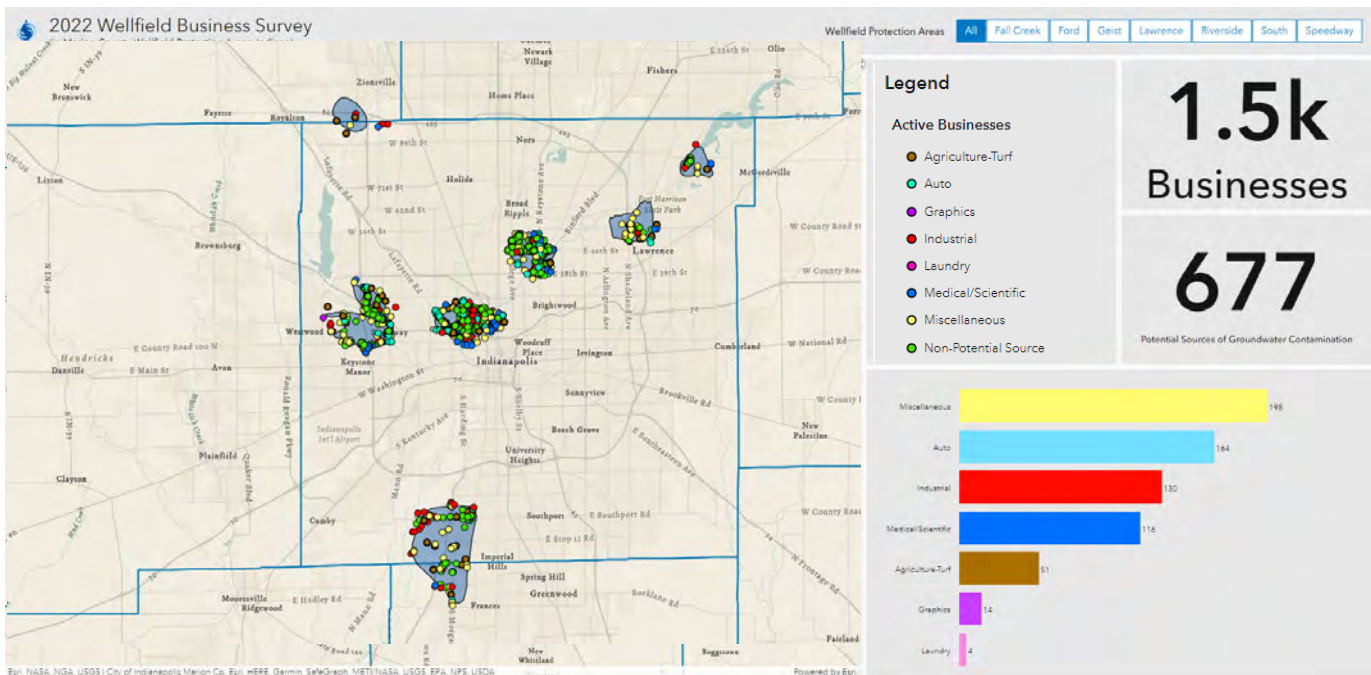


MCWEC Wellfield Business Survey

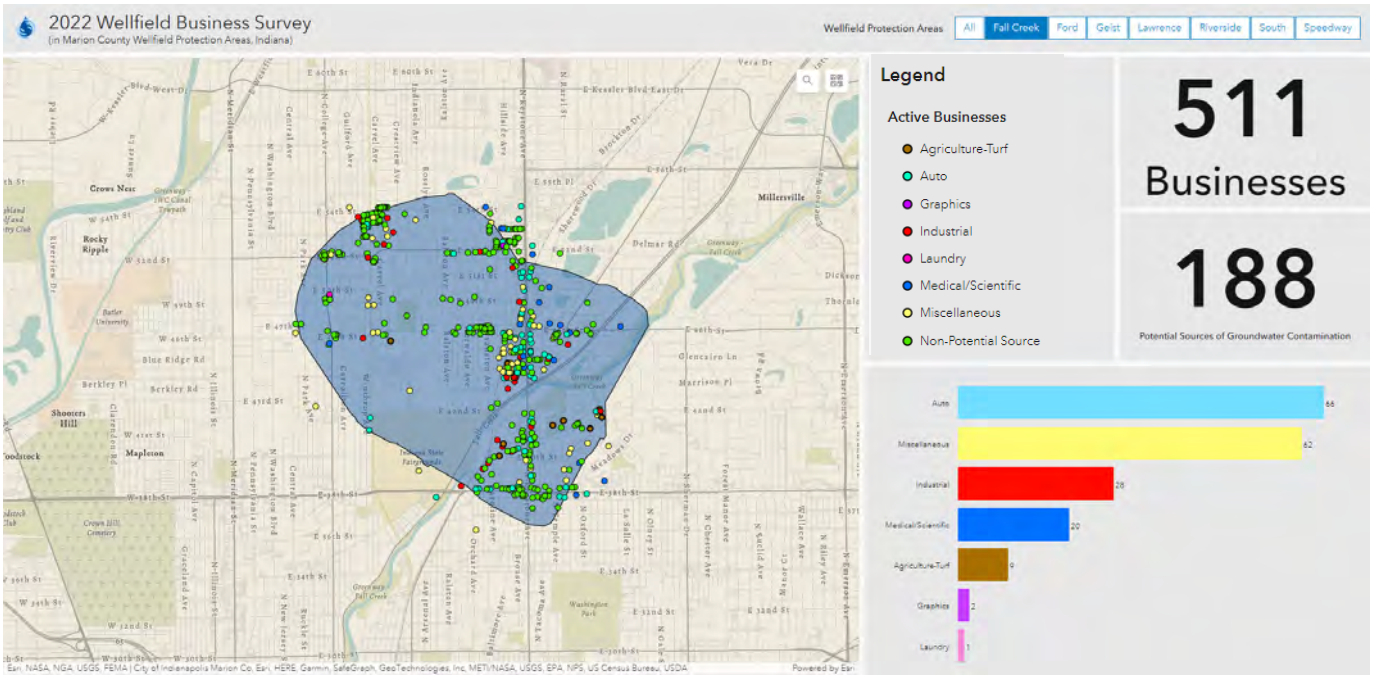
During the 4th quarter of every year, MCWEC documents these **potential groundwater contamination sources** through drive surveys in the wellfields. Staff visually identify the type of business and the status of operation (active or inactive). Sources located within a 1/4 mile of the wellfield zone are also included in the drive survey.

Drive survey data relies on being able to visually identify business information and whether it is an active business, which is not always possible. As such, the information provided in this report represent conservative estimates. Some sites may be listed in multiple data sets throughout this report.

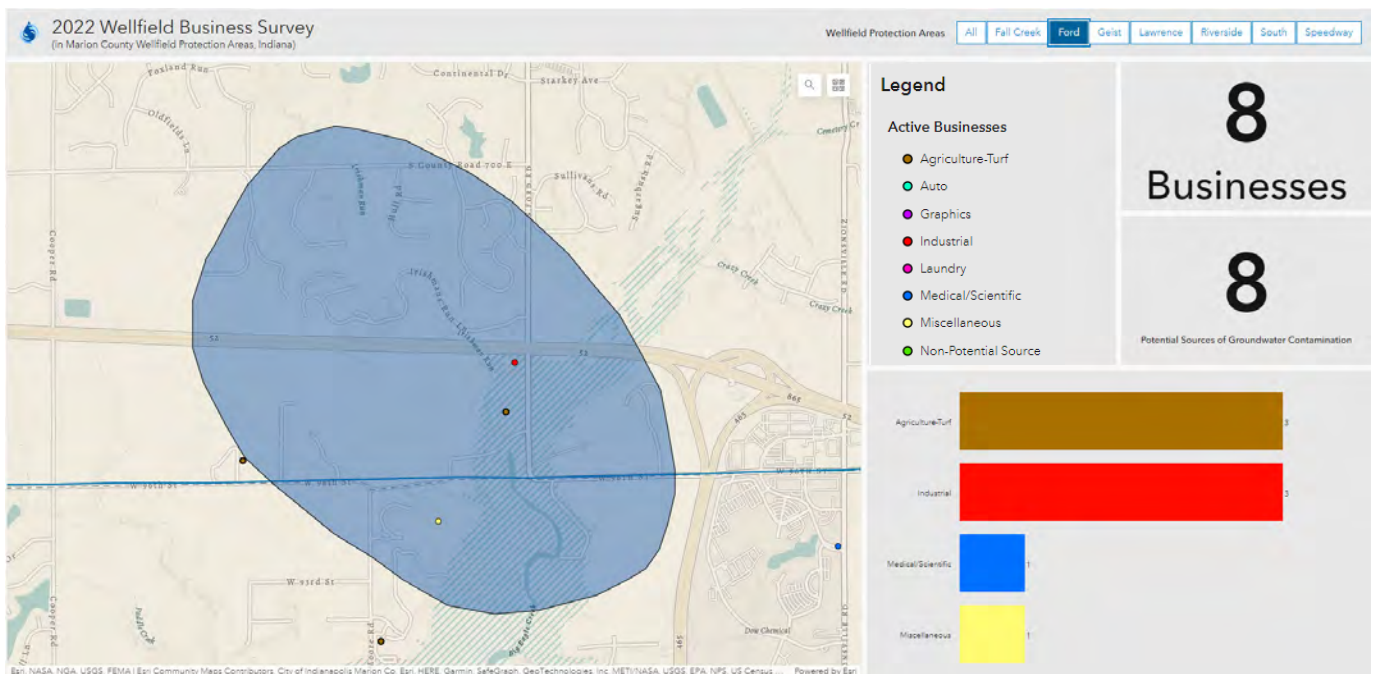
All wellfields



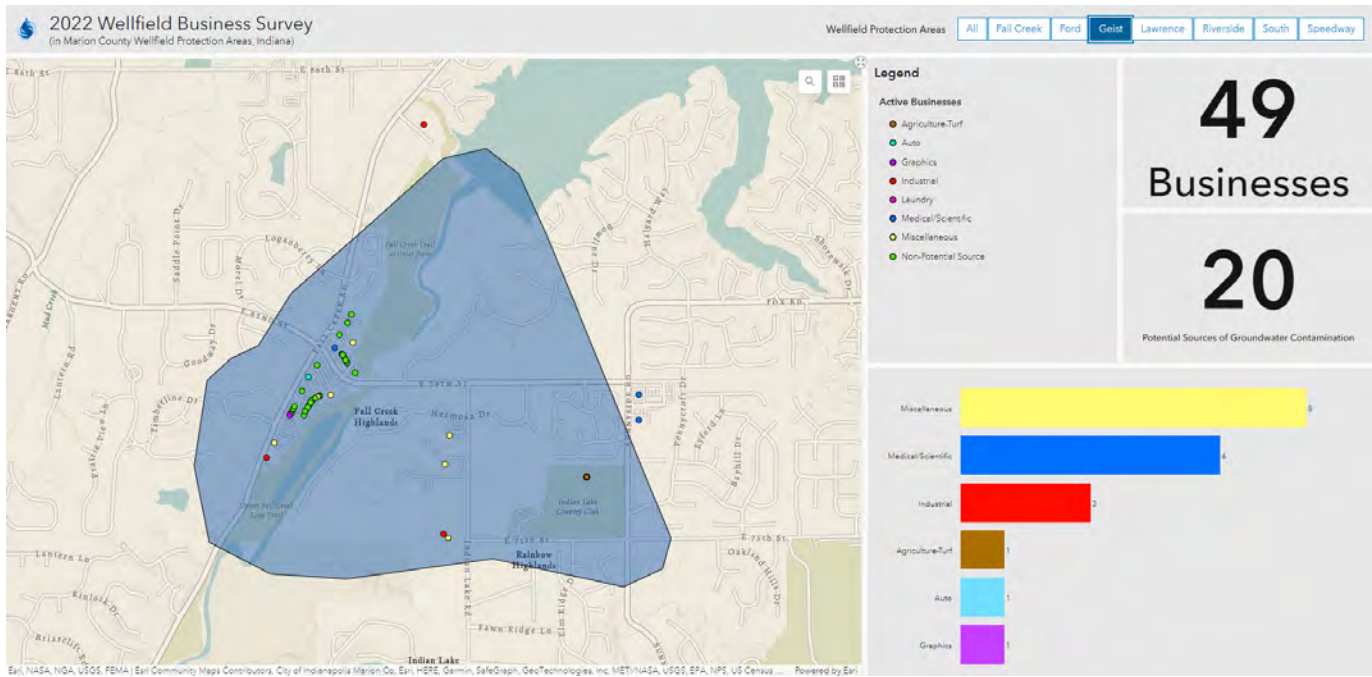
Fall Creek



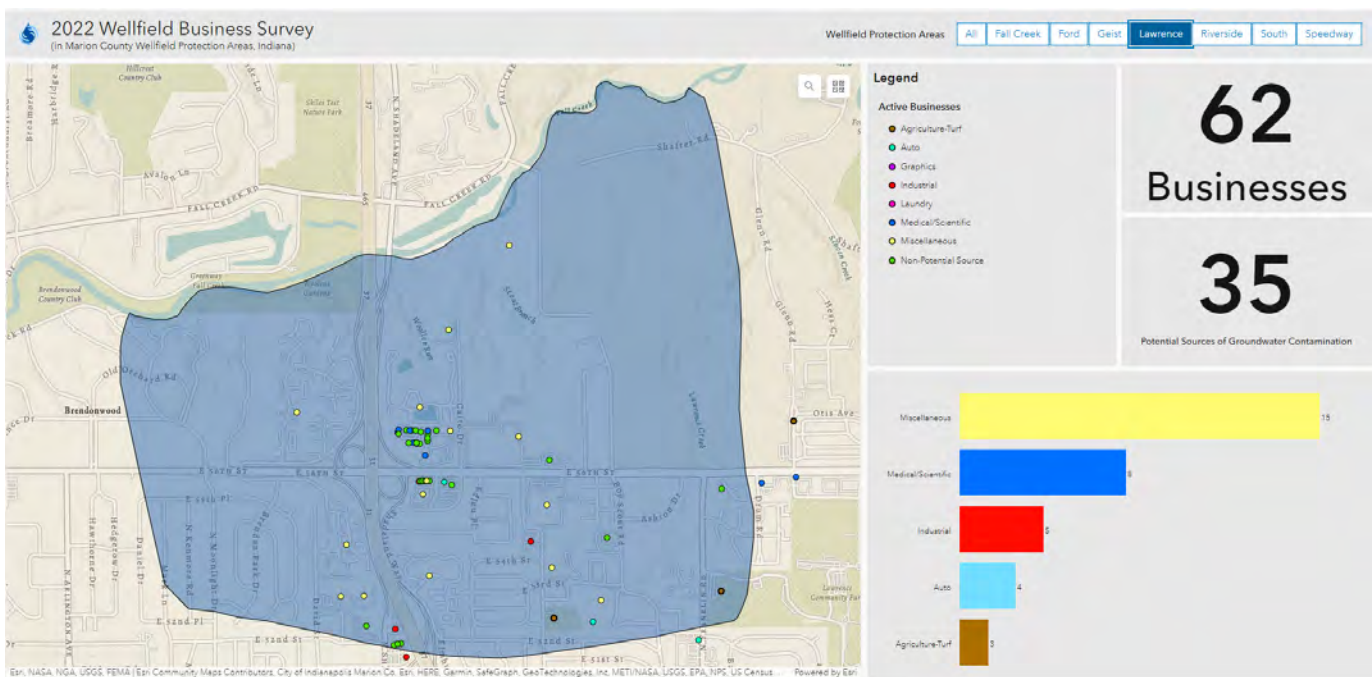
Ford



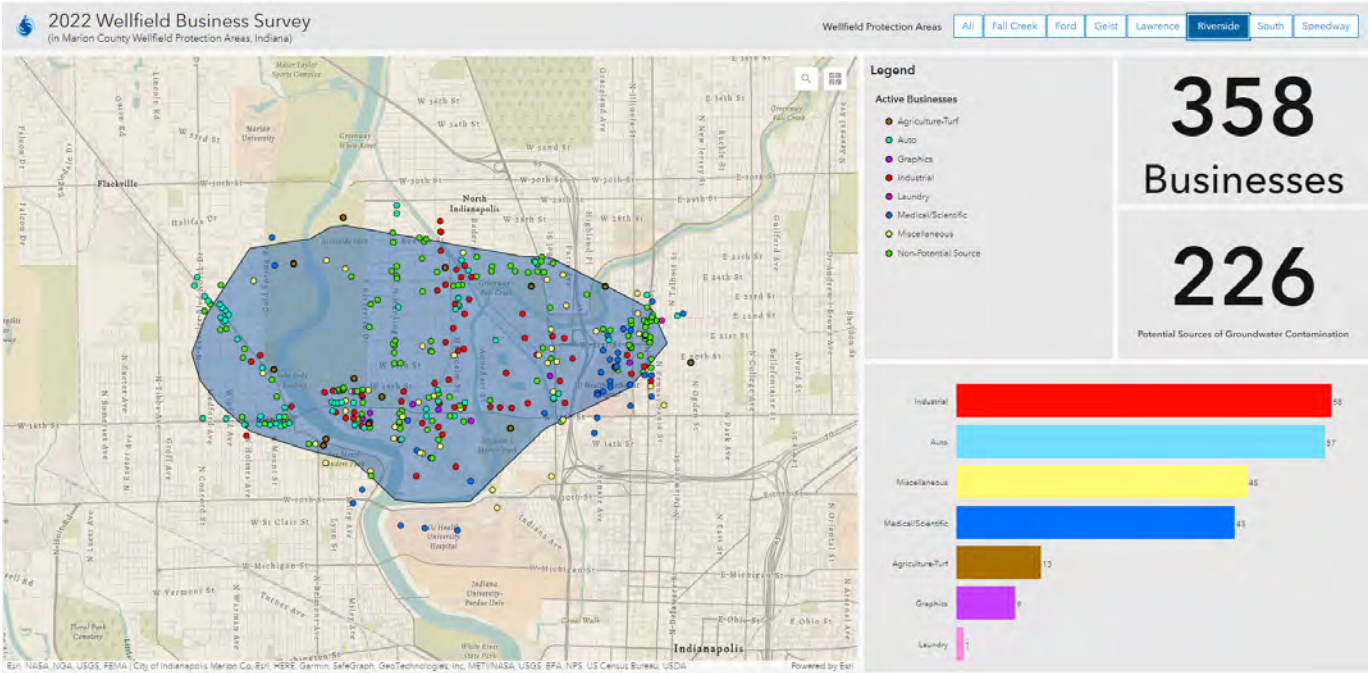
Geist



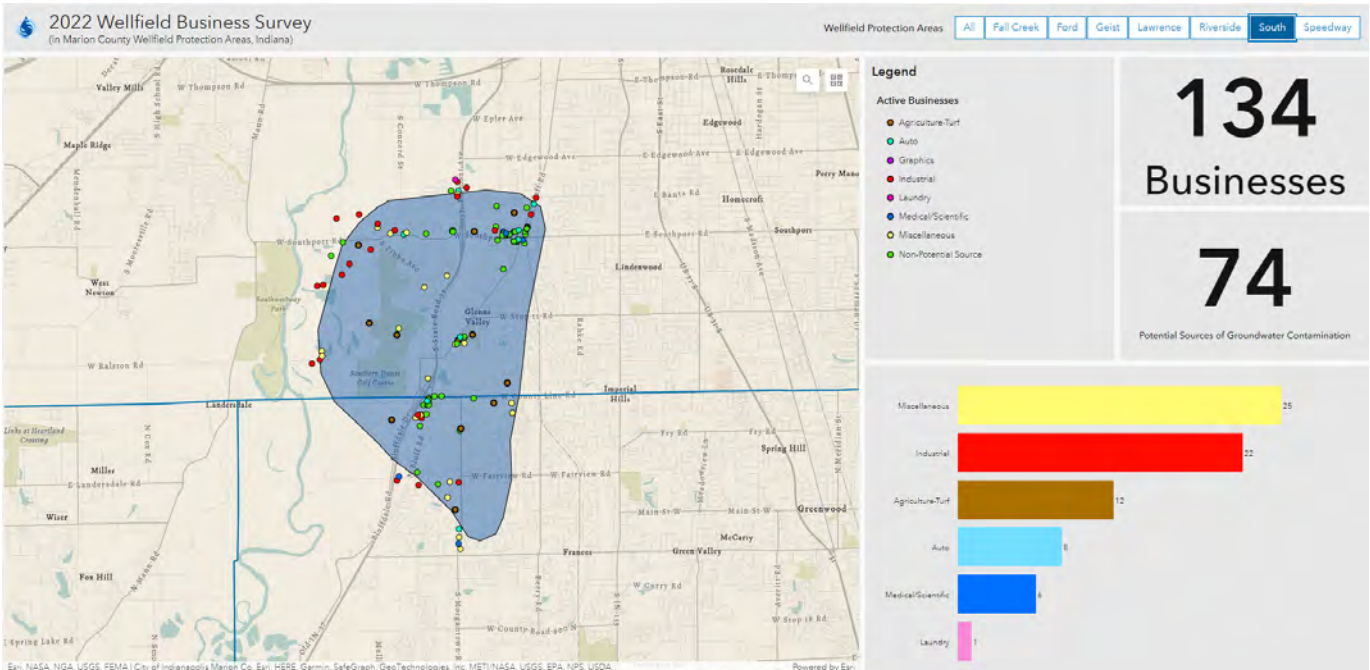
Lawrence



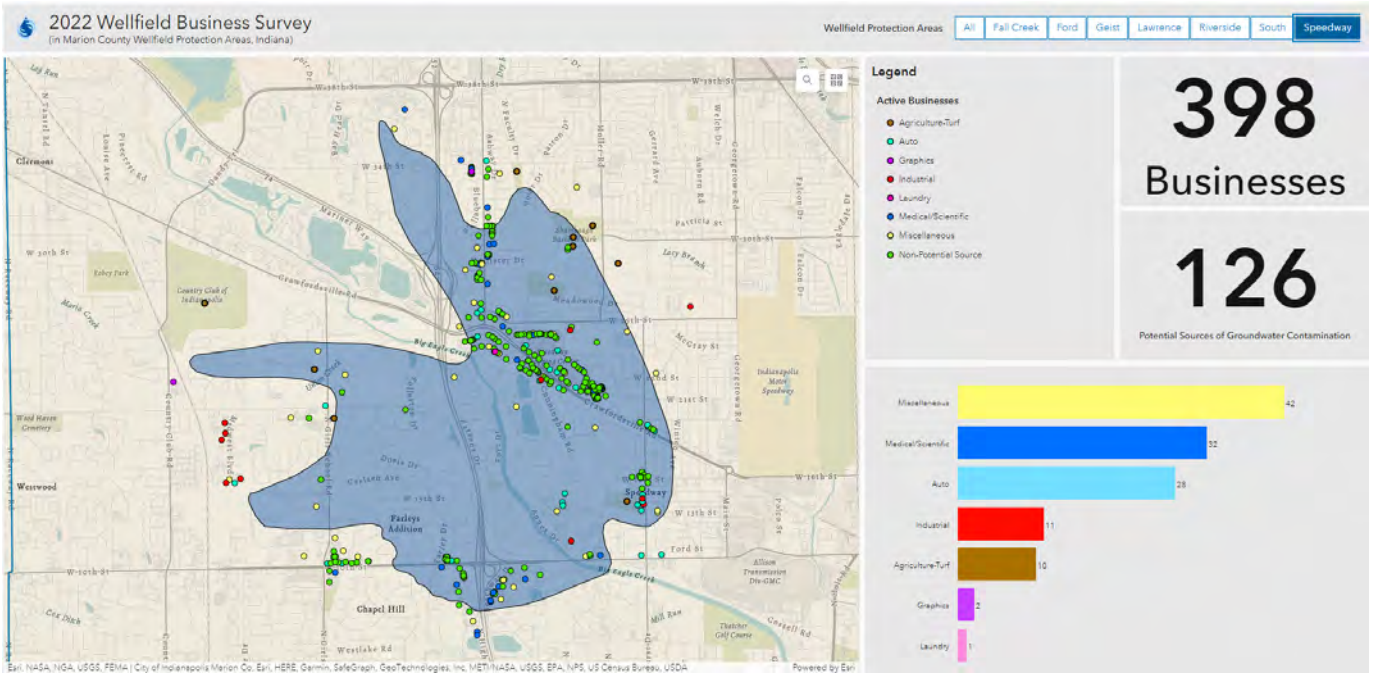
Riverside



South



Speedway



Other Potential Sources of Groundwater Contamination

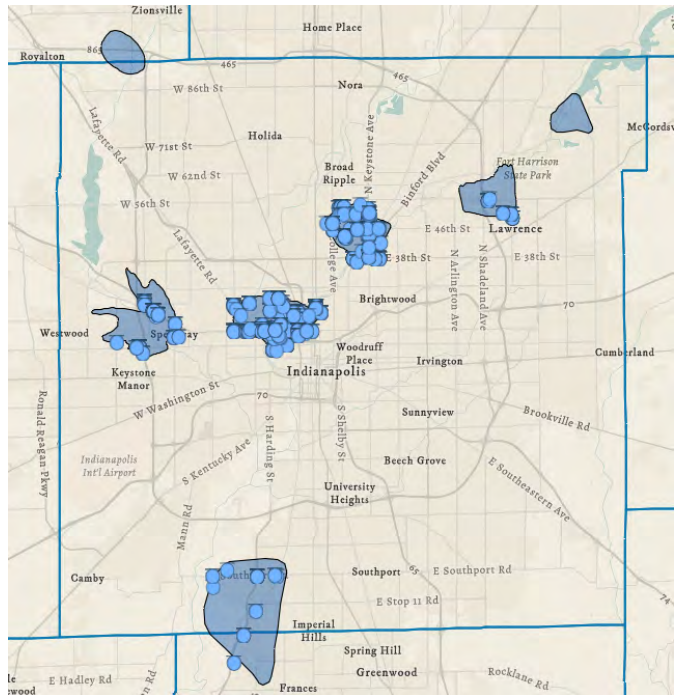
In addition to drive surveys conducted by MCWEC, federal and state agencies produce data sets to help identify potential sources of groundwater contamination.

***Data limitations:** The regulatory databases have limitations as to the accuracy of the information within them, as they are updated at varying time points across each year. As such, the information provided in this report represent conservative estimates based on the various limitations of the source data. Some sites may be listed in multiple data sets.*

Underground Storage Tank Sites

An underground storage tank (UST) system is a tank and any underground piping connected to the tank that has at least 10 percent of its combined volume underground. Indiana's Office of Land Quality is responsible for monitoring USTs.

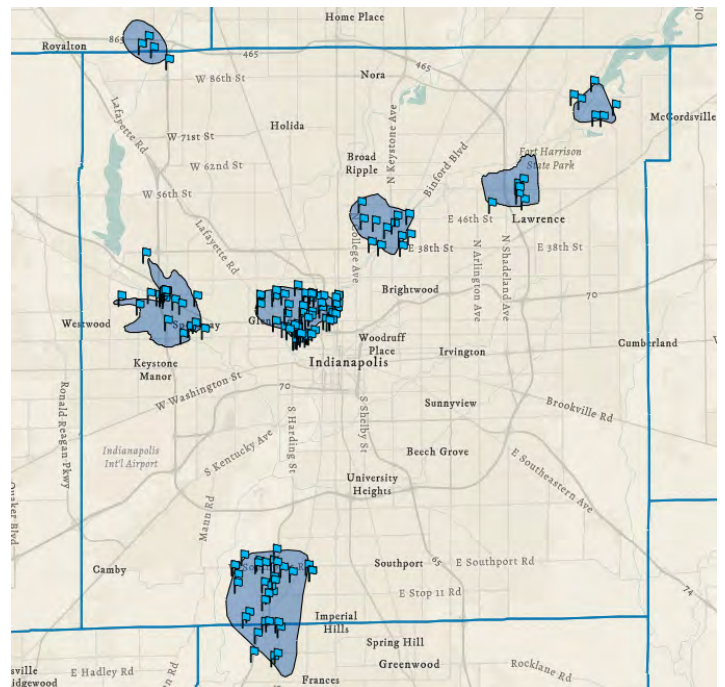
Source: IndianaMap, IDEM, February 2023



National Pollutant Discharge Elimination System Sites

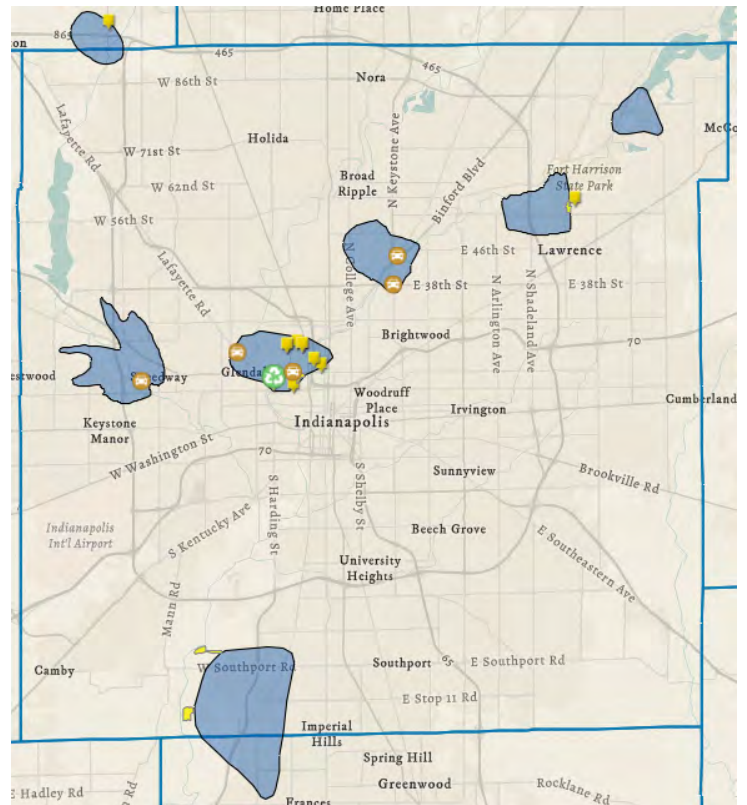
The National Pollutant Discharge Elimination System permit program controls water pollution by regulating point sources that discharge pollutants into waters of the United States.

Source: Indiana Geographic Information Office, February 2023



Landfills, Waste Disposal, Storage, and Recycling Sites

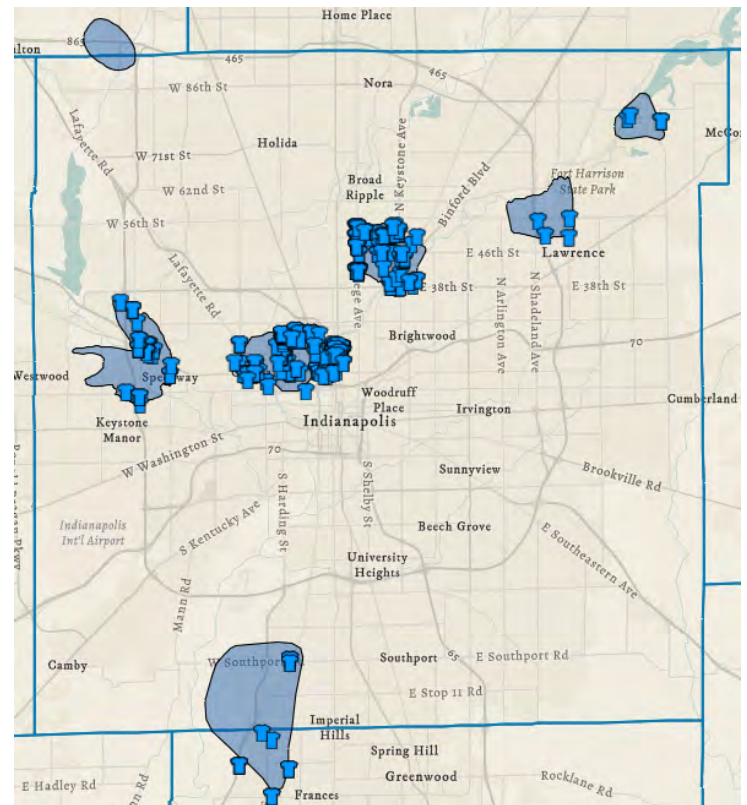
Sites where waste (including auto salvage) is disposed of or temporarily stored for disposal or recycling.



Dry Cleaners and Laundry

Dry cleaners have the potential to generate hazardous wastes as part of the cleaning process and must comply with both federal and state regulations. This data includes current and historic dry cleaners dating back to 1886.

Source: Indiana Geographic Information Office, February 2023



Known Groundwater Contamination Sites

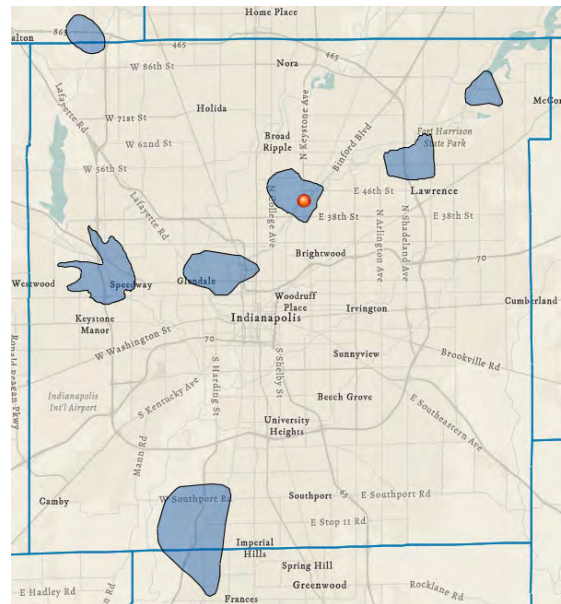
Sites which have **known groundwater contamination** are regulated through different federal and state programs to ensure they meet cleanup laws.

***Data limitations:** The regulatory databases have limitations as to the accuracy of the information within them, as they are updated at varying time points across each year. As such, the information provided in this report represent conservative estimates based on the various limitations of the source data. Some sites may be listed in multiple data sets.*

Superfund Sites

The Comprehensive Environmental Response, Compensation and Liability Act informally called "**Superfund**", allows the United States Environmental Protection Agency (EPA) to clean up contaminated sites and forces the parties responsible for the contamination to either perform cleanups or reimburse the government for EPA-led cleanup work.

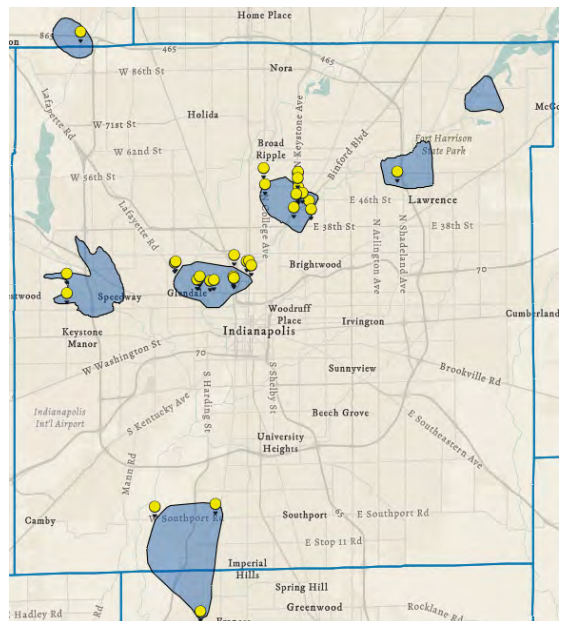
Source: Environmental Data Gateway (EPA), February 2023



State Cleanup Sites

Indiana's **State Cleanup Program** manages sites that are contaminated with hazardous substances or petroleum, but are not included on the National Priorities List of the federal Superfund program.

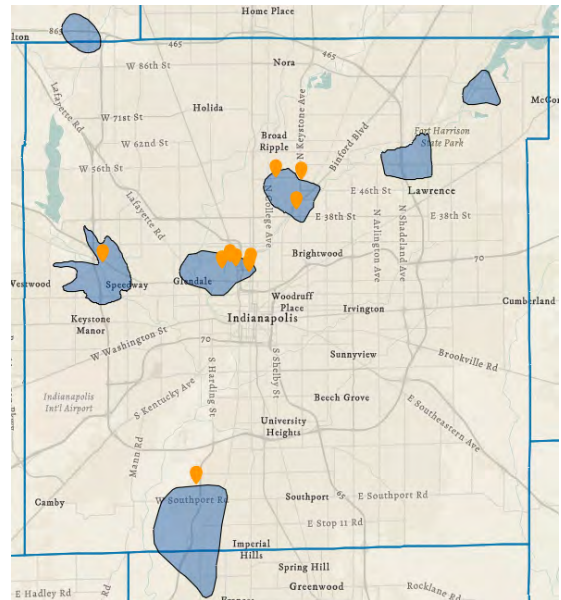
Source: IndianaMap, February 2023



Voluntary Remediation Program

Indiana's **Voluntary Remediation Program (VRP)** provides a process for property owners, operators, potential purchasers, and third parties to voluntarily address (by investigating and, if necessary, remediating) property that is or may be contaminated.

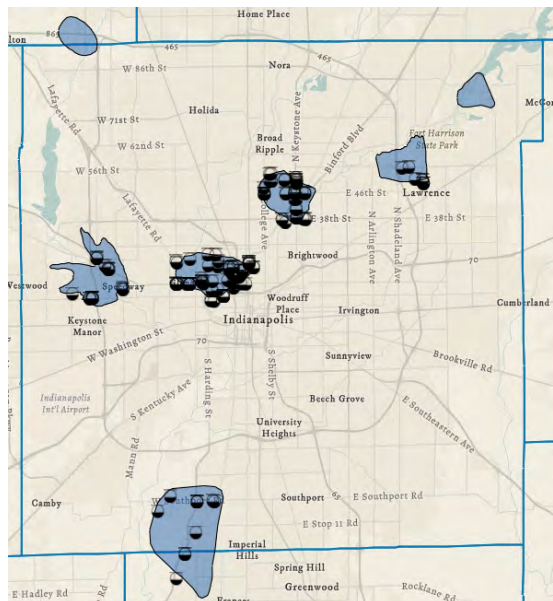
Source: IndianaMap, February 2023



Leaking Underground Storage Tank Sites

An **underground storage tank (UST)** system is a tank and any underground piping connected to the tank that has at least 10 percent of its combined volume underground. When a regulated UST has a leak or spill, Indiana's Office of Land Quality is responsible for ensuring adequate investigation and cleanup of the resulting contamination.

Source: IndianaMap, IDEM, February 2023

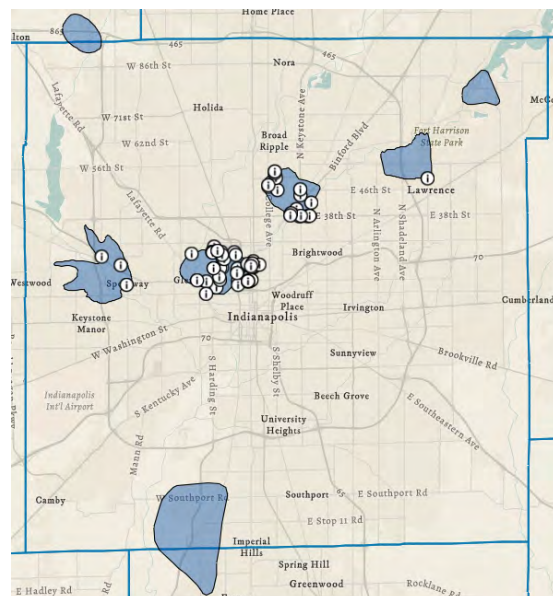


Brownfields

A **brownfield** is a parcel of abandoned or undeveloped land due to the presence or potential presence of contaminants that pose a risk to human health and the environment.

Indiana Finance Authority assists communities with brownfield redevelopment.

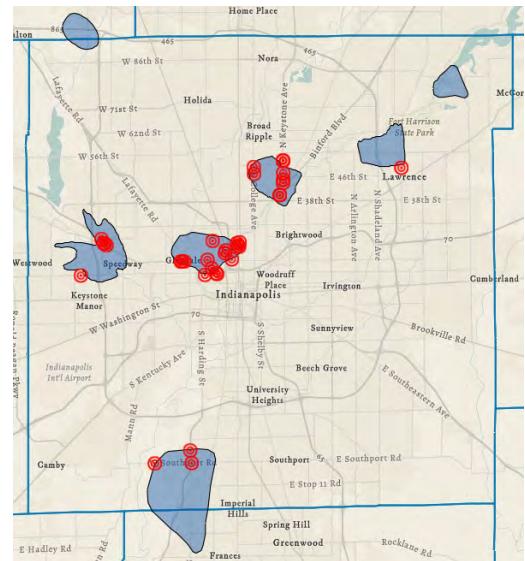
Source: IndianaMap, February 2023



Hazardous Waste Corrective Action

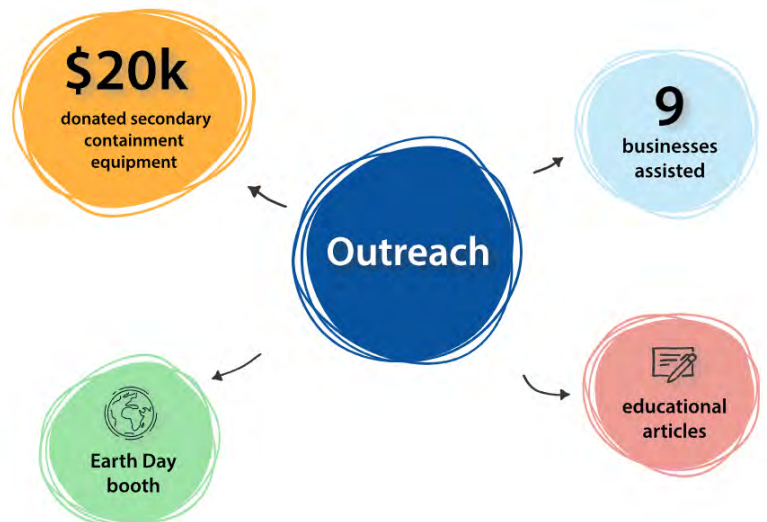
The Resource Conservation and Recovery Act (RCRA) Corrective Action Program investigates regulated hazardous waste management facilities for releases of contaminants (hazardous wastes or hazardous constituents) into the environment and determines whether any releases found require cleanup or further action.

Source: Indiana Geographic Information Office, February 2023



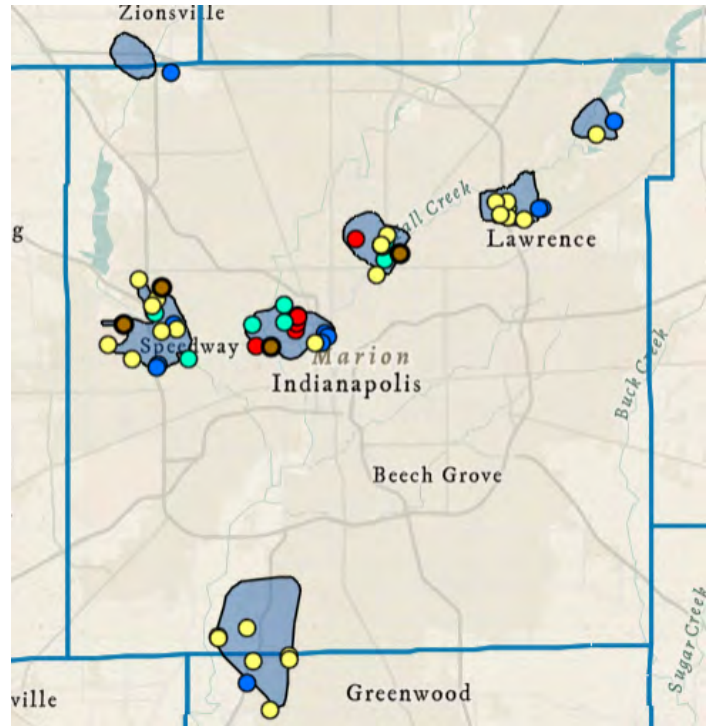
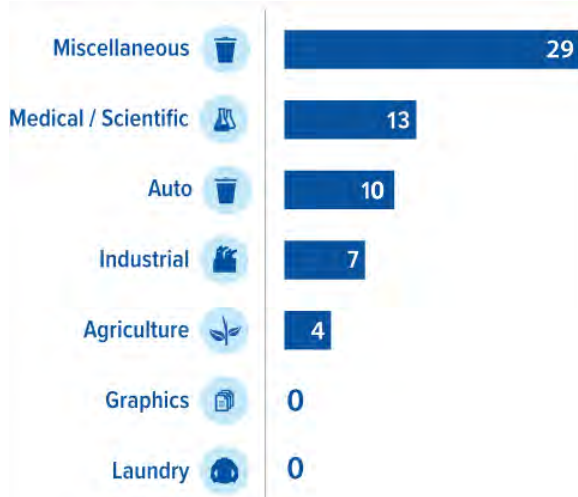
Groundwater Protection Activities in 2022

Throughout the year the Marion County Wellfield Corporation provided free technical assistance to businesses in the wellfields to improve groundwater protection best practices as well as undertaking various outreach activities to the public. The Technically Qualified Person (TQP) program oversaw new construction activity and permits in the wellfields.



Business Added to Potential Source Database in 2022

During the yearly drive survey completed in the 4th quarter, **63 business operations** in the wellfields were added as potential sources of groundwater contamination in the following categories:

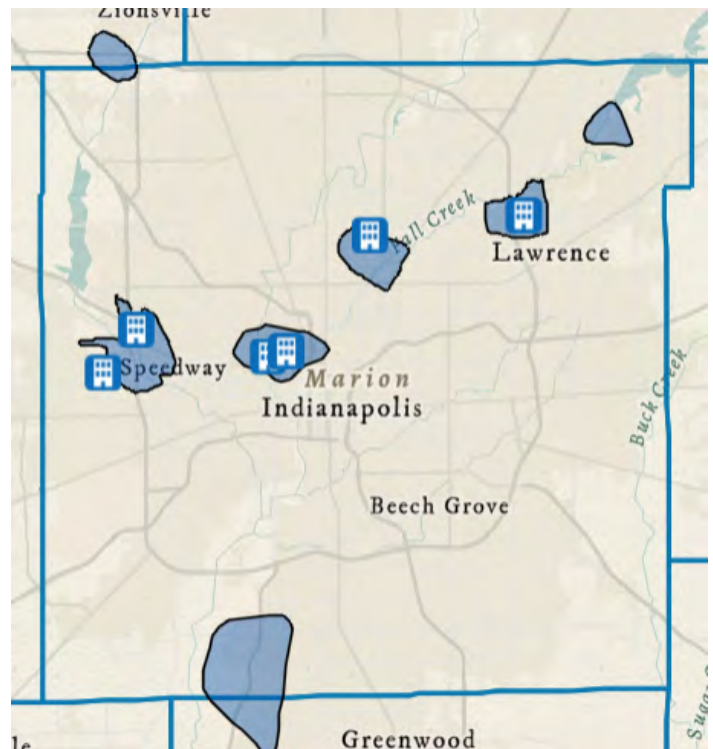


New Development in the Wellfields in 2022

The [Wellfield Protection Secondary Zoning Ordinance of the City of Indianapolis](#) (Section 742-204) requires **any new construction in the wellfields** to submit plans to be assessed by a **Technically Qualified Person (TQP)** with respect to potential for groundwater contamination.

In 2022, **7 wellfield approvals** were issued by the TQP program for new construction in the wellfields and **12 construction sites** were inspected.

Source: Indianapolis TQP Program





What can I do to protect our drinking water?

All businesses, individuals, and private well owners should follow safe practices for management of chemicals, waste, liquids, or other substances that could contaminate groundwater resources.

Businesses

If your business is located in one of the Wellfield Protection Areas you are **required by law to maintain compliance** with the [Marion County Public Health Department Wellfield Protection Standards](#) and the [Wellfield Protection Secondary Zoning Ordinance of the City of Indianapolis](#) (Section 742-204).

To assist you in becoming compliant, the Marion County Wellfield Education Corporation offers a **FREE, VOLUNTARY, & CONFIDENTIAL ASSESSMENT PROGRAM** for businesses in Wellfield Protection Areas.

Schedule **FREE** assessment

Call (317) 630-9060 or [submit your request online](#) to get started.

Llama (317) 630-9060 o [envia en linea](#).

Complete site visit

A trained environmental professional will visit and assess your business operations related to potential groundwater contaminants.



Review suggestions for your business

Receive a report with suggestions related to related to chemical/waste handling, storage and disposal; educational signage; spill kits; emergency response spill prevention plans and more.

Receive FREE equipment

Some businesses may also be eligible for FREE secondary containment equipment, spill kits to prevent / clean up hazardous spills, or outdoor drinking water protection signs.

Implement recommendations and train employees

Now you can be confident you are protecting our drinking water!

Additionally, the Marion County Wellfield Education Corporation website (www.MCWEC.org/businesses) contains many free downloads and resources to assist businesses and individuals in groundwater protection.



We applaud YOU!

To all business owners, individuals, community organizations, legislators, professionals, and countless others who have dedicated time and resources to protecting Marion County's drinking water resources - we extend our gratitude for the clean water we drink and use day in and day out. **THANK YOU!**

About the Authors

The Marion County Wellfield Education Corporation

The Marion County Wellfield Education Corporation (MCWEC) is a 501(3)c non-profit corporation established in 1996 by the Marion County Wellfield Protection Zoning Ordinance to support the protection of groundwater and drinking water supplies in Marion County, Indiana.

Our Mission: *to prevent contamination to the groundwater resources of Marion County through public awareness and education.*

**Chris
Barnett**

Board President / Treasurer
Marion County Wellfield
Education Corporation



Tom Crouch

Vice President
Marion County Wellfield
Education Corporation



**Rachel
Walker**

Secretary
Marion County Wellfield
Education Corporation



**John
Havard**

Board Member
(Citizens Energy Group)

**Keith
Holdsworth**

Board Member
(Department of Metropolitan
Development, City of Indianapolis)



Joe Merrick

Board Member
(Attorney, Indiana Court of Appeals)

Jeff Larmore

Board Member
(Marion County Public Health Department)

Dan Settle

Board Member
(Lawrence Utilities)

John Mundell

MCWEC Consultant
Mundell & Associates, Inc.

**Julie Reyes**

MCWEC Consultant
Mundell & Associates, Inc.



The Marion County Wellfield Education Corporation board members and [Mundell & Associates](#), a local environmental consulting firm under contract with MCWEC, contributed to this yearly report.

Learn more about MCWEC programs and activities at www.MCWEC.org or contact us by email at info@mcwec.org.

Credits

For questions about data, please contact info@mcwec.org.

World's Water data

[USGS](#), accessed 2/27/22

Identified and Potential Source Data

[Indiana Geographic Information Office, IndianaMap](#)